

# RENTING EQUIPMENT FROM HD SUPPLY WHITE CAP

## Rent or buy?

Every contractor wrestles with this question. Renting costs less, but is it as good as owning? Truth is, it can be a lot better than owning if you're renting from HD Supply White Cap. Take a look at the advantages of working with us:

- ▶ We rent and sell, so you get a straight-up, unbiased evaluation based on your situation:
- ▶ We always provide timely, professional delivery and pick-up service
- ▶ We take care of the maintenance (including back-up equipment and spare parts)
- ▶ We have more than 215 locations nationwide, so you'll find a well-stocked location nearby
- ▶ We provide design time and other engineering services needed when using form systems and equipment (things like placement of tilt-up inserts)

### **Many contractors are renting more equipment than they buy.**

It's a no-brainer. Spend less cash and your workers spend more time forming concrete – not coordinating material and equipment. And the real cost of owning equipment like scaffolding or braces is usually more than it seems to be. Using equipment – not owning it — grows profits. When contractors under-use fixed assets, it's a persistent resource drain. Plus, there are plenty of times like these when renting just makes sense:

- ▶ Handling short-term production peaks
- ▶ Filling in with needed, but sparingly-used equipment
- ▶ Using specialty equipment for specific, one-time requirements



# CAN HELP CONTRACTORS INCREASE PROFITS

## **The operational advantages of using rental equipment give you more options.**

Contractors that have greater flexibility also have distinct competitive advantages. They can bid on the jobs they want, not just the ones where they own the appropriate equipment to get it done. Here are some other advantages to consider:

- ▶ Get what you need immediately. There's no waiting on capital. When you get the job, get the right equipment right away.
- ▶ Work with the latest equipment. When a better method comes along, you can try it. You're not stuck with using just what you own.
- ▶ You're free of owner responsibilities. Forget about maintenance, repairs, debt, storage, interest, parts inventory, taxes and depreciation. Manage your job, not your equipment.
- ▶ Use the right equipment for the job. No more making do with what you have. Reduce labor costs by using what's best suited to each project.
- ▶ Increase worker productivity. Your crew won't be burdened with servicing, warehousing and transportation of equipment.
- ▶ Control construction costs better. Use rental invoices as a management tool. They provide a complete history of material delivered, used and picked up for each project.



## **A big financial advantage of using rental equipment is making cash more available.**

When contractors purchase their own forming systems, braces and concrete construction accessories, they don't have as much ready capital to respond to opportunities or handle surprise expenses. But preserving cash flow isn't the only financial benefit of renting. Here are some other ones to keep in mind:

- ▶ Rentals are an off-balance-sheet item – neither an asset nor a liability. That improves a contractor's bonding capacity and keeps credit lines available for short term needs.
- ▶ Rentals reduce taxable fixed assets. Renting equipment is a deductible expense, so you can fully expense it to a specific job instead of depreciation spanning years and several projects.
- ▶ Keep office accounting and administrative costs down. Ownership comes with extensive bookkeeping responsibilities and expenses.

Find out how equipment rental can help you grow your business by calling your local White Cap today. You'll get straight talk from one of our rent-or-buy experts.

***Tilt-Up Braces, Vibrators and complete Handset Forming Systems are among the many items found in the impressive HD Supply White Cap rental inventory.***



# WANT TO GROW YOUR BUSINESS?



## FLATWORK (SLAB ON GRADE) FORMING HARDWARE

PRODUCT NO.	DESCRIPTION
R510SFB	SCHOOL FORM BRACKET
R198DS	SCREED PIN/STEEL STAKE ROUND 3/4" X 12"-48"
R576	VIBRATORY SCREED (SELECT LOCATIONS ONLY)
R113NT	CONCRETE BLANKETS (SELECT LOCATIONS ONLY)
R1716	POWER TROWELS (SELECT LOCATIONS ONLY)
R198DS14	SCREED PIN/STEEL STAKE SQUARE 3/4" X 3/4" X 12"-48"
198DS112F	SCREED PIN/STEEL STAKE FLAT 1/2" X 1 1/2" X 24"-48"
R198SSPB	SCREED PIN BRACKET SINGLE
R198SPB	SCREED PIN BRACKET DOUBLE
RS9126106	CURB & HEADER FORM BRACKET
R198SPDSCR	SPEED CONTROL

## WALL FORMING HARDWARE

PRODUCT NO.	DESCRIPTION
R25115100	SNAP BRACKET
R505JAB	JAHN A BRACKET
R24921105	FORM A LINER BRACE
R25113100	5M TIE HOLDER
R128GND	RJD GRIPPER
R128BP	RJD BEARING PLATE
R12813254	RJD WALER WEDGE
R251NB001	LINER CLAMP
R505VWB24	WALER BRACKET 2X4
R25120220	WALER BRACKET 2X6
R25115300	SNAP JACK
R5911240	SHE BOLT 16 3/4" X 1/2" NC
R5912132	NUT WASHER 3/4" ACME
R505CAMLOCK	CAMLOCK BRACKET
R11377024	STIFFBACK BRACKET 2X4
R505JSJ	JAHN SCAFFOLD JACK A-89
R25121210	SCAFFOLD BRACKET W/O WALER HOOK
R25121215	SCAFFOLD BRACKET WALER HOOK
VARIOUS SIZES & STYLES	TAPER TIES
R251DELUXESB	SCAFFOLD BRACKET DELUXE
R25120350	CORNER LOCK HI-SPEED
R59120351	JAHN CORNER LOCK ASSY
R251SB	SCAFFOLD BRACKET A-90
R505JCB	JAHN C BRACKET
R24912899	JAHN TIE EXTENDER
R24916100	FORM BUTTON

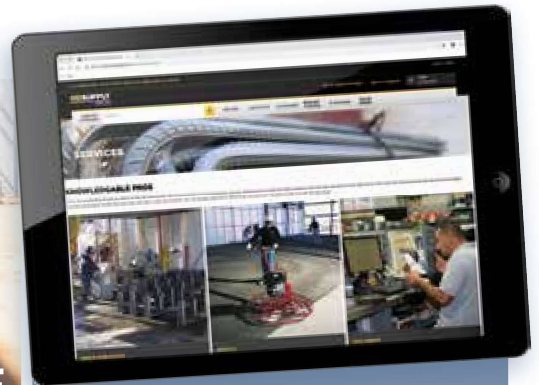
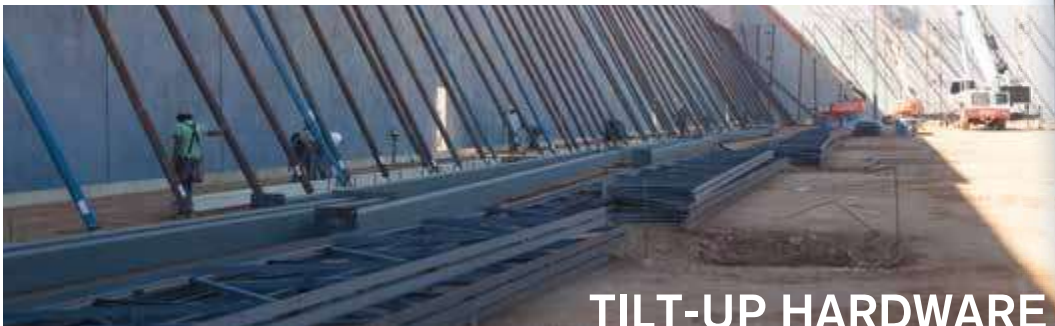
## DECK & BRIDGE DECK FORMING HARDWARE

PRODUCT NO.	DESCRIPTION
R25121305	STANDARD OVERHANG BRACKET
R24921340	BRIDGE OVERHANG BRACKET C-49 TELESCOPING
R251GRDPST	GUARD RAIL POST
R25137026	SLAB GRAB POST
RA93	SAFETY RAIL A-93
R1982	SCREED POST 1/2" NC/3/4" X 6"-36"
R19823	SCREED POST-SCREW POINT 3/4" X 12"-36"
R19824	SCREED POST-NAIL POINT 3/4" X 12"-36"



## COLUMN FORMING HARDWARE

PRODUCT NO.	DESCRIPTION	SIZE
R251271	SCISSOR CLAMP	36", 48", 60"
R113GCC	ECONO CLAMP	24", 30", 36"
R251272	LOK-FAST COLUMN CLAMP	24", 36", 48"



# VISIT

[WWW.WHITECAP.COM/SHOP/WC/SERVICES](http://WWW.WHITECAP.COM/SHOP/WC/SERVICES)

for the locations  
of our Tilt-Up service centers

## RENT HERE

- Concrete Accessories
- Loose-Wall Concrete
- Forming Systems
- School Form Brackets
- Tilt-Up Braces
- Decorative Concrete Stamps

**GET FREE DELIVERY**  
on qualified orders

Call HD Supply White Cap  
for availability

**800.944.8322**

PRODUCT NO.	DESCRIPTION
	PIPE BRACES(20 DIFFERENT SIZES) - MEADOW-BURKE & DAYTON/RICHMOND
R25145803	LIFT HARDWARE - MEADOW BURKE SL-III
R249T43R	DAYTON-GR
RRGYROH	RICHMOND
	MEADOW BURKE - MANUAL RING CLUTCH (EDGE LIFT) 2 TON - 8 TON
-	DAYTON SWIFT LIFT 2 TON - 20 TON
	LIFT PLATE -
R24945195	MEADOW BURKE EMERGENCY
R249SLP	DAYTON SPECIAL
	STRONGBACK -
-	RODS/BOLTS (3/4", 1", 1 1/4")
-	PLATES (SINGLE & DOUBLE)
-	FOR PANEL ERECTION (STEEL & ALUMINUM)
	BOLTS -
-	COIL (VARIOUS SIZES)
-	SUPER ASSEMBLY-MEADOW BURKE, 11 5/8" X & 15 1/2"
-	SWIVEL LIFT PLATE, 3/4", 1", 1 1/4", 1 1/2"
-	KNEE BRACE LUMBER ATTACHMENT
-	FASTBACK RODS - RICHMOND/DAYTON
R24945305	LIFT PLATE - DOUBLE ANGLE
R24945207	LIFT PLATE - EDGE
R25145500	DOUBLE LIFT BEAM - MEADOW BURKE
R249T46	DOUBLE LIFT BEAM - DAYTON
R24945651	TILT-UP FORM ANGLE BRACKET

## EQUIPMENT

### FRESNO STORE ONLY

PRODUCT NO.	DESCRIPTION
R61001	STORAGE CONTAINER
-	MANLIFT - GAS, (VARIOUS SIZES)
-	MANLIFT - ELECTRIC, (VARIOUS SIZES)
-	SCISSOR L-LIFT (VARIOUS SIZES)
-	LIGHT TOWER
-	GENERATORS (VARIOUS SIZES)
-	AIR COMPRESSORS (VARIOUS SIZES)
-	RAMMERS
-	TRENCHER
-	CUT-OFF SAW
-	HEATERS, FORCED AIR
-	HAMMER, DEMOLITION
-	HAMMER, ROTARY
-	LASER LEVEL
-	FLOOR GRINDER

### SELECT LOCATIONS ONLY

PRODUCT NO.	DESCRIPTION
R61001	SOFFCUT SAW
R234G2000	SOFFCUT SAW
R234G4000	SOFFCUT SAW
-	VIBRATOR MOTORS (VARIOUS SIZES)
-	VIBRATOR SHAFTS & HEADS (VARIOUS SIZES)
-	SCREED, VIBRATORY